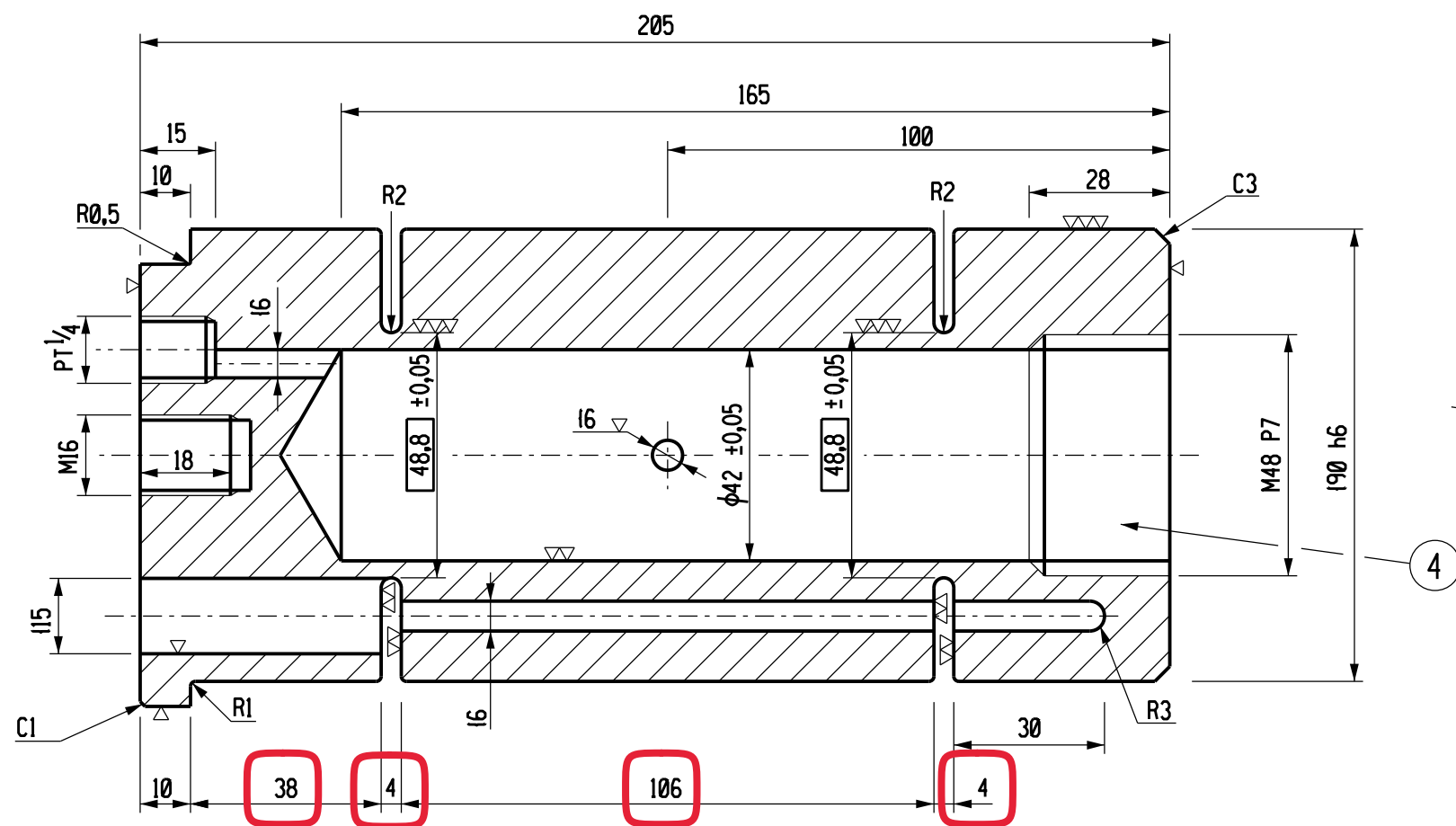
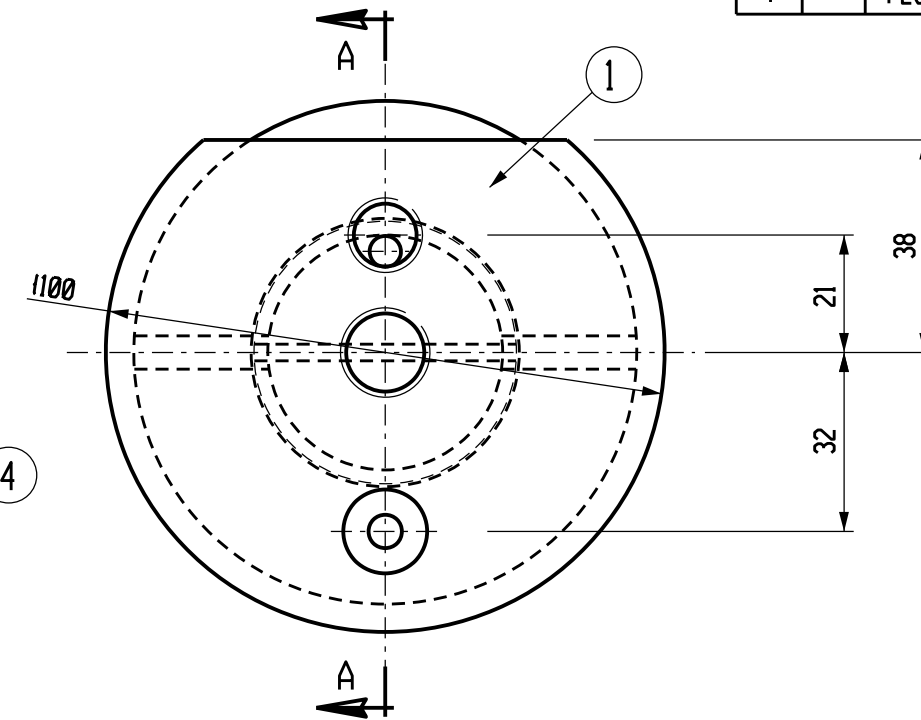


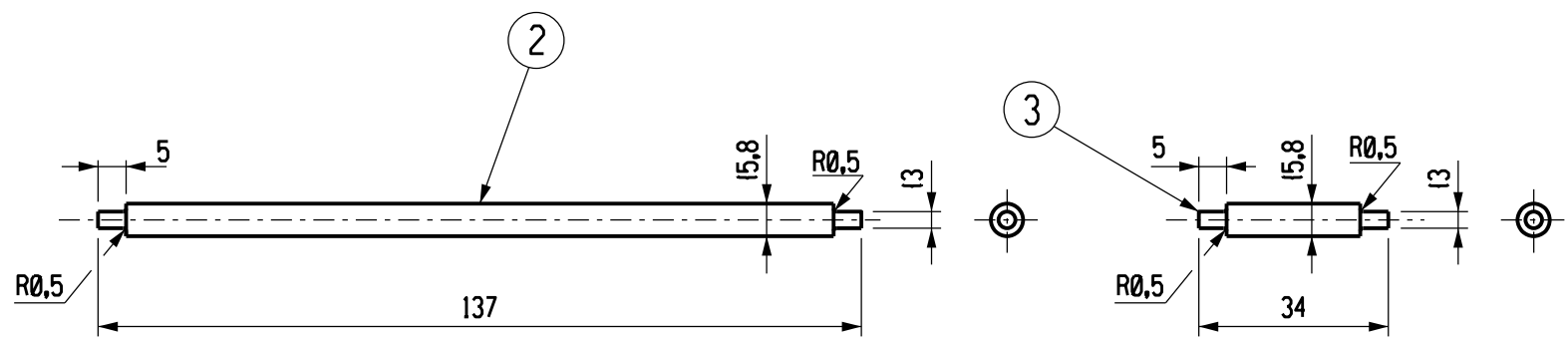
BILL OF MATERIALS

ITEM	QTY	DESCRIPTION	MATERIAL
1		SHEAR PIN	CARBON STEEL GRADE:080M40
2		137mm INDICATOR PIN	MILD STEEL
3		34mm INDICATOR PIN	MILD STEEL
4		PLUG	MILD STEEL

	= 3.2 μ m Ra
	= 1.6 μ m Ra
	= 0.4 μ m Ra



SECTION A-A



INDICATOR PINS

NOTE:

- 1.) THE DIMENSION IN SHOULD BE DECIDED FINALLY SO AS TO GIVE THE BREAKING STRENGTH OF 43,500 Kg ON THE BASE OF SHEARING STRENGTH OF THE MATERIAL SHOWN AT MOCK-UP TEST.
- 2.) THE DIMENSION SHOWN IN S FOR CONVENIENCE OF MACHINING TEST PIECES, SUPPOSING THAT THE MATERIAL MAY SHOW SHEARING STRENGTH OF 45 Kg/mm A? MOCK-UP TEST.
- 3.) ALL SHARP EDGES TO BE ROUNDED SMOOTHLY.
- 4.) ITEM 2 IS NOT FOR MANUFACTURE BUT INCLUDED FOR ASSEMBLY PURPOSES ONLY.

AS BUILT & APPROVED
AS PER REVISION 1

APPROVED BY: R. ABRAHAMS
APPROVED DATE: 2007-11-23

18	1	2007-11-23	INDICATOR PINS ADDED, CENTRE HOLE REVISED TO M16 AND GREASE HOLE MOVED 90° AS PER DEV No.GRP774, AND MOD No's 250,251,252,253	R.A.	F.K.	M.VAN ROOYEN	P.NEL		
00	0		DEV. 56/98 FIRST ISSUE						
D.O.	REV	DATE	INDEX REFERENCE :	REV BY	CHKD BY	AUTH BY	APPR BY	38/	REFERENCE DRAWINGS
DRG REGISTR									
KKS APP									
AUTH BY	12 08 98	D.J.							
CHKD BY	12 08 98	JAC							
DRAWN BY	10 06 98	B.M.M.							
SCALE	1:1								
				APPROVED BY: D.JOHNSON				DATE: 12 08 98	
				GARIEP POWER STATION UNITS 1-4 MAIN MACHINE SET GOVERNOR SYSTEM (MEX) SHEAR PIN MANUFACTURING DETAIL				18.38/3484	
								REV 1	

